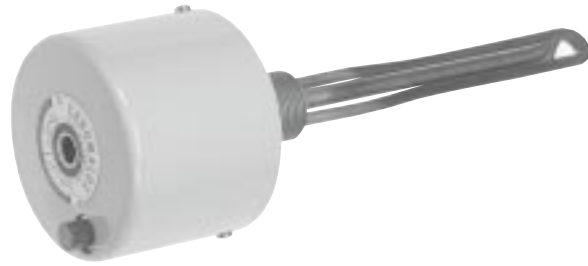


WC & WCS

Screwplug Liquid Level Control

- Process Temperatures Up to 240°F
- 120 or 240 Vac Input, Single Phase
- Positive OFF When Liquid Level Drops to Expose Output Element
- Single Pole, Single Throw (SPST) Snap-Action Switch
- Manual Reset Required to Re-Energize Heater



Description

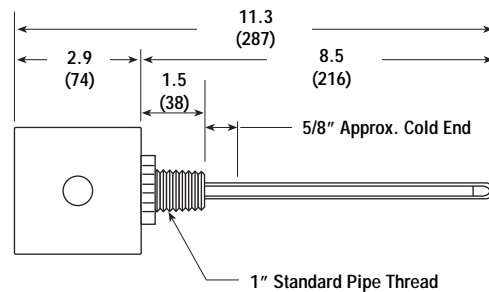
The WC Liquid Level Control consists of a low wattage heater and SPST latching cutout switch, physically designed as a screwplug heater. When the WC is in liquid, the heat of the small wattage heater is dissipated into the liquid. When the liquid level drops below the heater, the thermostat changes states (opens) and remains open until it is physically reset. This action can protect the main process heater and the process.

Features

- Positive Action Switch requires manual reset to re-energize the heater
- Pilot light indicates heater ON.
- 25 Amps Cutout Contact at 277 V maximum. For higher voltages or currents, use an external contactor.

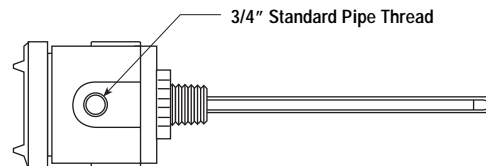
Dimensions

E1 General Purpose Enclosure



All Dimensions in Inches (mm)

E2 Moisture Resistant/Explosion Proof Enclosure



Specifications and Ordering Information

Input Volts	Watts	W/in ²	Material			E1 General Purpose				E2 Moisture Resistant/Explosion Proof			
			Heater Element	Thermowell	Screw Plug	Model	Stock	PCN	Wt. (Lbs.)	Model	Stock	PCN	Wt. (Lbs.)
120	100	9.7	INCOLOY®	Copper	Brass	WC-120	S	269501	2.5	WC-120E2	NS	269544	6
240	200	10.4	INCOLOY®	Copper	Brass	WC-240	S	269510	3	WC-240E2	NS	269552	7
120	100	9.7	INCOLOY®	INCOLOY®	SST	WCS-120	S	269528	2.5	WCS-120E2	NS	269560	6
240	200	10.4	INCOLOY®	INCOLOY®	SST	WCS-240	S	269536	3	WCS-240E2	NS	269579	7

Stock Status: S = stock AS = assembly stock NS = non-stock